

ATRAACE auto Model **WA-4000 / WA-5500**

Improves efficiency in drilling work

Max drilling capacity

35
mm dia.

WA-3500
(Conventional product)

40
mm dia.

WA-4000

NEW

Max drilling capacity

50
mm dia.

WA-5000
(Conventional product)

55
mm dia.

WA-5500*

NEW

*For drilling of 51 mm diameter or larger, the allowable maximum plate thickness is 35 mm for JETBROACH 50L, and 50 mm for JETBROACH 75L.



Portable Magnetic Base Drilling Machine

ATRAACE auto Model WA-4000 / WA-5500

New semi-automatic ATRA with high-performance motor now available

Downsized motor with increased durability!



YouTube



WA-4000

Max. hole diameter **40 mm**

Max. plate thickness **50 mm***



WA-5500

Max. hole diameter **55 mm**

Max. plate thickness **75 mm***

Specifications

Model		WA-4000		WA-5500	
Power Source (Single Phase)		220 - 240 V AC, 50/60 Hz		220 - 240 V AC, 50/60 Hz	
Electric Drill	Rated Power Consumption	W	1010	1040	
	Rated Current	A	4.3	4.3	
	No-load Speed	min ⁻¹ (rpm)	740	520	
Magnet Power Consumption		W	40	70	
Hole Capacity mm	Cutter	Hole Diameter		Plate Thickness	
	One-touch Type JETBROACH 25L	12 to 35	9 to 25	17.5 to 35	9 to 25
	One-touch Type JETBROACH 35L	17.5 to 40	9 to 35*	17.5 to 40	9 to 35*
	One-touch Type JETBROACH 50L	12 to 40	9 to 50*	17.5 to 19.5	9 to 35*
		-	-	20 to 50	9 to 50*
		-	-	51 to 55	9 to 35*
	One-touch Type JETBROACH 75L	-	-	17.5 to 19	9 to 35*
		-	-	20 to 50	9 to 75*
		-	-	51 to 55	9 to 50*
	One-touch Type HI-BROACH 25L	14 to 35	9 to 25	14 to 50	9 to 25
	One-touch Type HI-BROACH 50L	14 to 35	9 to 50*	16 to 19	9 to 35*
		-	-	20 to 40	9 to 50*
		-	-	41 to 50	9 to 35*
Max. Stroke		mm	84	107	
Magnet Holding Power		N(kgf)	7056 (720)	9800 (1000)	
Magnet Dimensions		mm	92 (W) x 213 (L)	101 (W) x 203 (L)	
Power Cord Length		m	3	3	
Mass (Weight)		kg	19	22	
Accessories Included		<ul style="list-style-type: none"> • Carry Case • 3 mm Hex.Socket Screw Key • Cutting Oil 0.5L • 8 x 10 mm Spanner • Pilot Pin 08035 • Guard • Sub Handle • Chain 		<ul style="list-style-type: none"> • Carry Case • 3 mm Hex.Socket Screw Key • 4 mm Hex.Socket Screw Key • Cutting Oil 0.5L • 8 x 10 mm Spanner • Pilot Pin 08050 • Guard • Sub Handle • Chain • Chip Breaker (Installed) 	

*Be sure to use the Chip Breaker when drilling holes with a plate thickness of 35 mm or more.



Equipped with various functions for safety and efficiency



Fail-Safe Protection

Built-in Motion Sensor

If any lateral movement or excess vibration is detected, both the drill and the feed motor stop. Nitto Kohki is the first company to incorporate this feature into magnetic base drills.

Fail-safe Restart

The drill will not re-start even if power is re-supplied after accidental shutdown. Drilling can only be continued after turning on the drill switch.

Magnet Open-circuit Sensor

The drill will not start until the magnetic field is active.

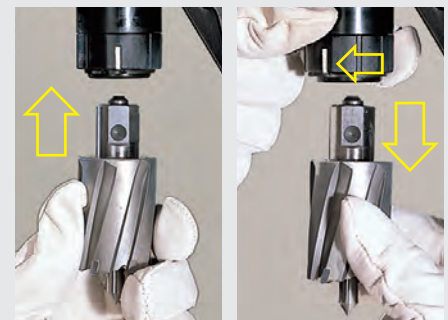
Chip Breaker

Be sure to use the Chip Breaker when drilling with a plate thickness of 35 mm or more. If it is not used, the cutter will be damaged, shortening its lifetime. The Chip Breaker comes as a standard accessory with WA-5500. For WA-4000, please purchase it separately.



One-touch Cutter Replacement

Replacement is quick and easy with our unique push fit self-centering cutter system.

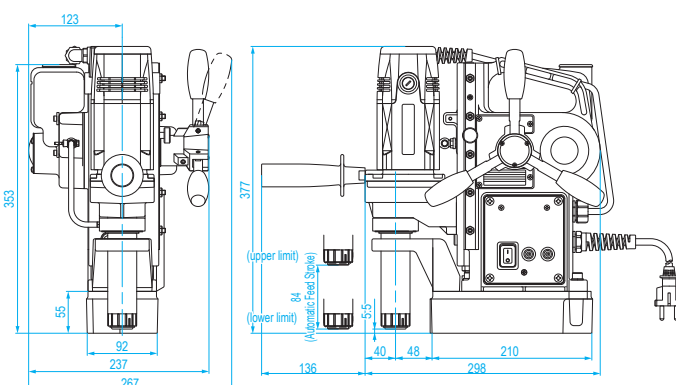


Mounting the cutter

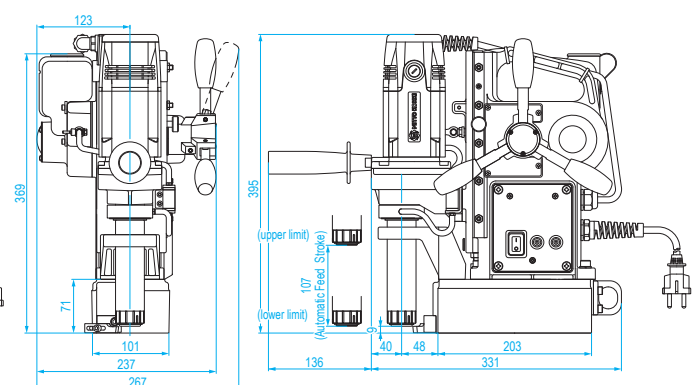
Removing the cutter

External Dimensions

WA-4000



WA-5500



(Unit: mm)

Portable Magnetic Base Drilling Machine

ATRAACE auto



JETBROACH One-touch Type						JETBROACH One-touch Type						JETBROACH One-touch Type						HI-BROACH One-touch Type						HI-BROACH One-touch Type					
Depth	mm dia.	PN	WA-4000	WA-5500	Pilot Pin	Depth	mm dia.	PN	WA-4000	WA-5500	Pilot Pin	Depth	mm dia.	PN	WA-4000	WA-5500	Pilot Pin	Depth	mm dia.	PN	WA-4000	WA-5500	Pilot Pin	Depth	mm dia.	PN	WA-4000	WA-5500	Pilot Pin
25 mm	12	TK01148	●		06025	18	TK01283	●	●*1		08075	17.5	TK01350		●	●*1	06025	14	TK00700	●	●		50 mm	14	TK00723	●			06050
	13	TK01149	●			19	TK01284	●	●*1			15	TK00701	●	●			15	TK00724	●	●								
	14	TK01150	●			19.5	TK01285	●	●*1			16	TK00702	●	●			16	TK00725	●	●	●*1							
	15	TK01151	●			20	TK01286	●	●			17	TK00703	●	●			17	TK00726	●	●	●*1							
	16	TK01152	●			20.5	TK01287	●	●			17.5	TK01391	●	●			18	TK00727	●	●	●*1							
	17	TK01153	●			21	TK01288	●	●			18	TK01392	●	●			19	TK00728	●	●	●*1							
	17.5	TK01249	●	●		21.5	TK01289	●	●			19	TK01393	●	●			20	TK00729	●	●								
	18	TK01250	●	●		22	TK01290	●	●			19.5	TK01394	●	●			21	TK00730	●	●								
	18.5	TK01251	●	●		22.5	TK01291	●	●			20	TK01395	●	●			22	TK00731	●	●								
	19	TK01252	●	●		23	TK01292	●	●			21	TK01396	●	●			23	TK00732	●	●								
35 mm	19.5	TK01253	●	●	08035	23.5	TK01293	●	●		08050	26	TK01360		●		08025	21.5	TK01397	●	●		50 mm	24	TK00733	●	●		
	20	TK01254	●	●		24	TK01294	●	●			22	TK01398	●	●			25	TK00734	●	●								
	20.5	TK01255	●	●		24.5	TK01295	●	●			22.5	TK01399	●	●			26	TK00735	●	●								
	21	TK01256	●	●		25	TK01296	●	●			23	TK01400	●	●			27	TK00736	●	●								
	21.5	TK01257	●	●		25.5	TK01297	●	●			23.5	TK01401	●	●			28	TK00737	●	●								
	22	TK01258	●	●		26	TK01298	●	●			24	TK01402	●	●			29	TK00738	●	●								
	22.5	TK01259	●	●		26.5	TK01299	●	●			24.5	TK01403	●	●			30	TK00739	●	●								
	23	TK01260	●	●		27	TK01300	●	●			25	TK01404	●	●			31	TK00740	●	●								
	23.5	TK01261	●	●		28	TK01301	●	●			26	TK01405	●	●			32	TK00741	●	●								
	24	TK01262	●	●		29	TK01302	●	●			27	TK01407	●	●			33	TK00742	●	●								
50 mm	24.5	TK01263	●	●	08050	30	TK01303	●	●		08075	35	TK01370		●		08025	28	TK01408	●	●		50 mm	34	TK00743	●	●		
	25	TK01264	●	●		31	TK01304	●	●			36	TK01371		●			29	TK01409	●	●			35	TK00744	●	●		
	25.5	TK01265	●	●		32	TK01305	●	●	●*1		37	TK01372		●			30	TK01410	●	●			36	TK00745	●	●		
	26	TK01266	●	●		33	TK01306	●	●			38	TK01373		●			31	TK01411	●	●			37	TK00746	●	●		
	26.5	TK01267	●	●		34	TK01307	●	●			39	TK01374		●			32	TK01412	●	●			38	TK00747	●	●		
	27	TK01268	●	●		35	TK01308	●	●			40	TK01375		●			33	TK01413	●	●			39	TK00748	●	●		
	28	TK01269	●	●		36	TK01309	●	●			41	TK01376		●			34	TK01414	●	●			40	TK00749	●	●		
	29	TK01270	●	●		37	TK01310	●	●			42	TK01377		●			35	TK01415	●	●	●*1		41	TK00750	●	●	●*1	
	30	TK01271	●	●		38	TK01311	●	●			43	TK01378		●			36	TK01416	●	●	●*1		42	TK00751	●	●	●*1	
	31	TK01272	●	●		39	TK01312	●	●			44	TK01379		●			37	TK01417	●	●	●*1		43	TK00752	●	●	●*1	
50 mm	32	TK01273	●	●	08050	40	TK01313	●	●		08075	45	TK01380		●		08025	38	TK01418	●	●		50 mm	44	TK00753	●	●	●*1	
	33	TK01274	●	●		41	TK01314	●	●			46	TK01381		●			39	TK01419	●	●	●*1		45	TK00754	●	●	●*1	
	34	TK01275	●	●		42	TK01315	●	●			47	TK01382		●			40	TK01420	●	●	●*1		46	TK00755	●	●	●*1	
	35	TK01276	●	●		43	TK01316	●	●			48	TK01383		●			41	TK01421	●	●	●*1		47	TK00756	●	●	●*1	
	36	TK01277	●	●		44	TK01317	●	●			49	TK01384		●			42	TK01422	●	●	●*1		48	TK00757	●	●	●*1	
	37	TK01278	●	●		45	TK01318	●	●			50	TK01385		●			43	TK01423	●	●	●*1		49	TK00758	●	●	●*1	
	38	TK01279	●	●		46	TK01319	●	●			51	TK01386		●*2			44	TK01424	●	●	●*1		50	TK00759	●	●	●*1	
	39	TK01280	●	●		47	TK01320	●	●			52	TK01387		●*2			45	TK01425	●	●								
	40	TK01281	●	●		48	TK01321	●	●			53	TK01388		●*2			46	TK01426	●	●								
	50 mm	12	TK01154	●			06050	49	TK01322	●		●			54	TK01389			●*2			47		TK01427	●	●			
13		TK01155	●		50	TK01323		●	●		55	TK01390			●*2		48	TK01428	●	●									
14		TK01156	●		51	TK01324		●	●*1							49	TK01429	●	●										
15		TK01157	●		52	TK01325		●	●*1							50	TK01430	●	●										
16		TK01158	●		53	TK01326		●	●*1																				
50 mm	17	TK01159	●			54	TK01327	●	●*1																				
	17.5	TK01282	●	●*1		55	TK01328	●	●*1																				

*1: Max. plate thickness: 35 mm
*2: Max. plate thickness: 50 mm

*1: Max. plate thickness: 35 mm
*2: Max. plate thickness: 50 mm

Pilot Pin					
06025	PN : TK01167	06050	PN : TK01166	08025	PN : TK01486
08035	PN : TK01487	08050	PN : TK01488	08075	PN : TJ17436

Optional Accessories					
Ref. No.	PN	Description	Sales Unit	Applicable Model	
				WA-4000	WA-5500
1	TB05186	Chip Breaker Ass'y	1 set	●	
2	TB01507	Cutting Oil 2L	1 piece	●	●
3	TB04374	Supporting Magnet Ass'y	1 set	●	●
4	TB02536	Sleeve 6.5 for Triangle Shank Drill Bit	1 piece	●	●
5	TB07696	Pipe Attachment Ass'y	1 set	●	



NITTO KOHKI CO., LTD.

Web www.nitto-kohki.co.jp/e/

Head Office

2-9-4, Nakaikegami, Ota-ku, Tokyo 146-8555, Japan
Tel : +81-3-3755-1111 Fax : +81-3-3753-8791
E-mail : overseas@nitto-kohki.co.jp



DISTRIBUTED BY