



### Carbon Neutral

By supplying components for hydrogen fueling, Nitto Kohki contributes to build a carbon neutral society.

For low pressure / medium pressure / high pressure

## Quick Connect Coupling for Hydrogen

# CUPLA Series for Hydrogen



*Compact size saves space.  
Unique valve design minimizes air ingress.*



For low pressure

## H2-CZL CUPLA

*High flow rate type  
Unique valve design minimizes air ingress.  
Various thread sizes available.*



For low pressure

## H2-ZEL CUPLA

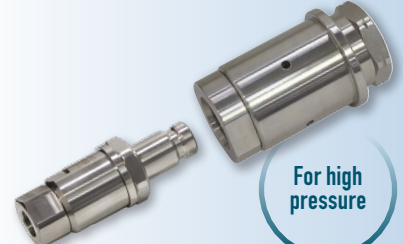
*Separation prevention mechanism  
prevents accidental disconnection.  
Working pressure 21 MPa*



For medium pressure

## H2-HSU CUPLA

*Working pressure 87.5 MPa  
For leak testing and pressure  
resistance testing.*



For high pressure

## Receptacle Simplified nozzle

*We pioneered the development of Japan's first hydrogen  
quick-connect couplings, HHV CUPLA.*

MIRAI, a fuel cell electric vehicle from Toyota Motor Corporation,  
is equipped with HHV CUPLA.



Receptacle

Nozzle

Working pressure  
70 MPa

For high pressure

Working pressure  
35 MPa



Quick connect couplings for fueling high pressure hydrogen

Special made-to-order

## HHV CUPLA



Web Site



For supplying hydrogen to fuel cell devices.



For hydrogen transportation, filling for storage, and various testing applications.



For filling for storage, and various testing applications.

## For space saving and lightweight use

Compact size saves space.  
Unique valve design minimizes air ingress and gas release during connection and disconnection.



Size (Thread) R 1/8, R 1/4

Working pressure  
**1.0 MPa**

For low pressure

Semi-standard

Stainless Steel Minimized Spillage Push-to-connect Function

# H2-CZL CUPLA

## For high flow rate needs

Unique valve design minimizes air ingress and gas release during connection and disconnection.



Size (Thread) Rc 1/4, Rc 3/8, Rc 1/2, Rc 3/4, Rc 1

Working pressure  
**1.0 MPa**

For low pressure

Semi-standard

Stainless Steel Minimized Spillage Push-to-connect Function

# H2-ZEL CUPLA

## For medium pressure use

The separation prevention mechanism ensures easy locking simply by turning the sleeve after connection.



Size (Thread) Please contact us for details.

Working pressure  
**21.0 MPa**

For medium pressure

Special made-to-order

Stainless Steel Separation Prevention Mechanism

# H2-HSU CUPLA

## For high pressure use

Working pressure 87.5 MPa  
Suitable for leak testing and pressure resistance testing.

\*Simplified nozzle is not equipped with a valve or filter.



Size (Thread) Please contact us for details.

Working pressure  
**87.5 MPa**

For high pressure

Special made-to-order

Stainless Steel

# Receptacle / Simplified nozzle



Read without fail and observe the "Instruction sheet" that comes with the product and the following pages in the Quick Connect Couplings General Catalog; [Precautions Relating to the Use of ALL CUPLA].  
[Working pressure] The normal allowable fluid pressure under continuous use. Exceeding the working pressure may cause damage and leakage.

## NITTO KOHKI CO., LTD.

Web [www.nitto-kohki.co.jp/e/](http://www.nitto-kohki.co.jp/e/)

### Head Office

2-9-4, Nakaikegami, Ota-ku, Tokyo 146-8555, Japan  
Tel : +81-3-3755-1111 Fax : +81-3-3753-8791  
E-mail : [overseas@nitto-kohki.co.jp](mailto:overseas@nitto-kohki.co.jp)



DISTRIBUTED BY